



76 Surf Drive Secret Harbour, WA



4



2



2

Calling all investors

This family home sits on 540sqm block, in a superb location with easy access to the main road and a short drive to Secret Harbour Shopping Centre. Stunning parkland within walking distance, ideal for the kids or pets to have a run with the ball.

Excellent tenants paying \$450 per week have a lease until August 2022.

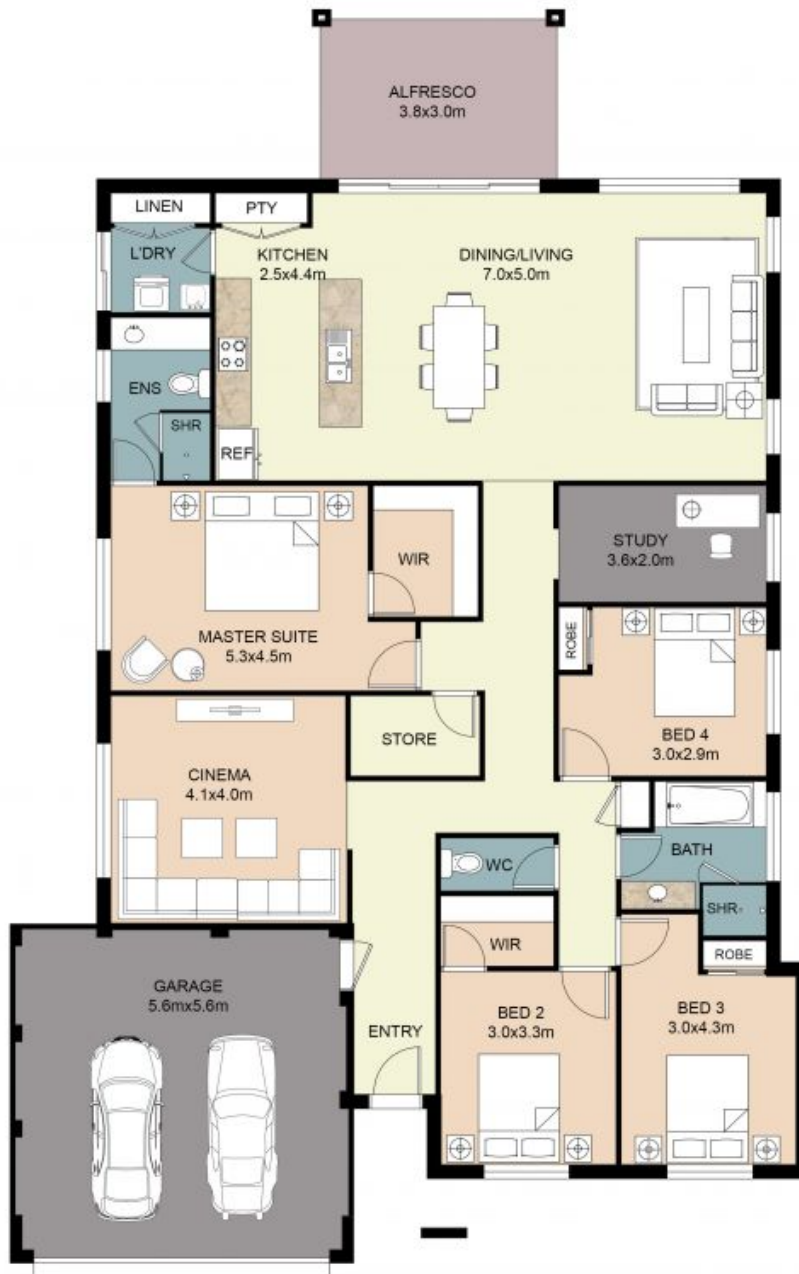
The kitchen is centrally located and offers a practical space overlooking the open plan living and dining areas, featuring plenty of cupboard space, gas stove top, dishwasher recess, fridge recess, the ideal place to catch up with the whole family.

Gabrielle Abbott

0430 303 882

Melissa Foggin

0477 060 168



FLOOR PLAN

This floor plan including furniture, fixture measurements and dimensions are approximate and for illustrative purposes only. BoxBrownie.com gives no guarantee, warranty or representation as to the accuracy and layout. All enquiries must be directed to the agent, vendor or party representing this floor plan.

76 Surf Drive